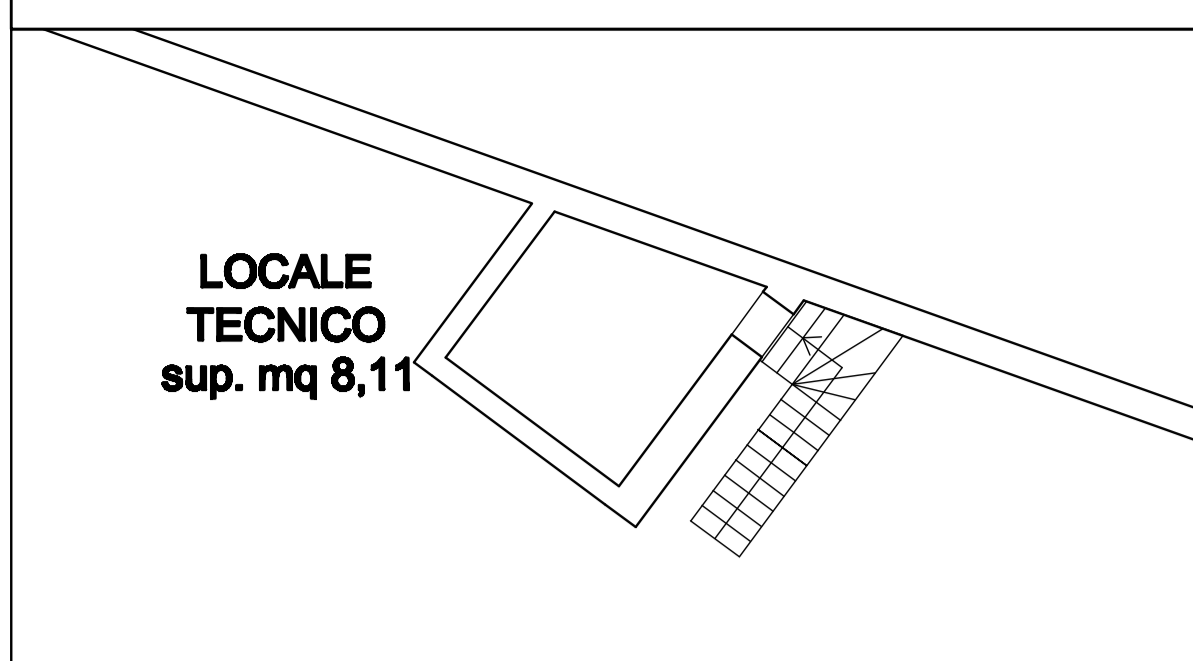
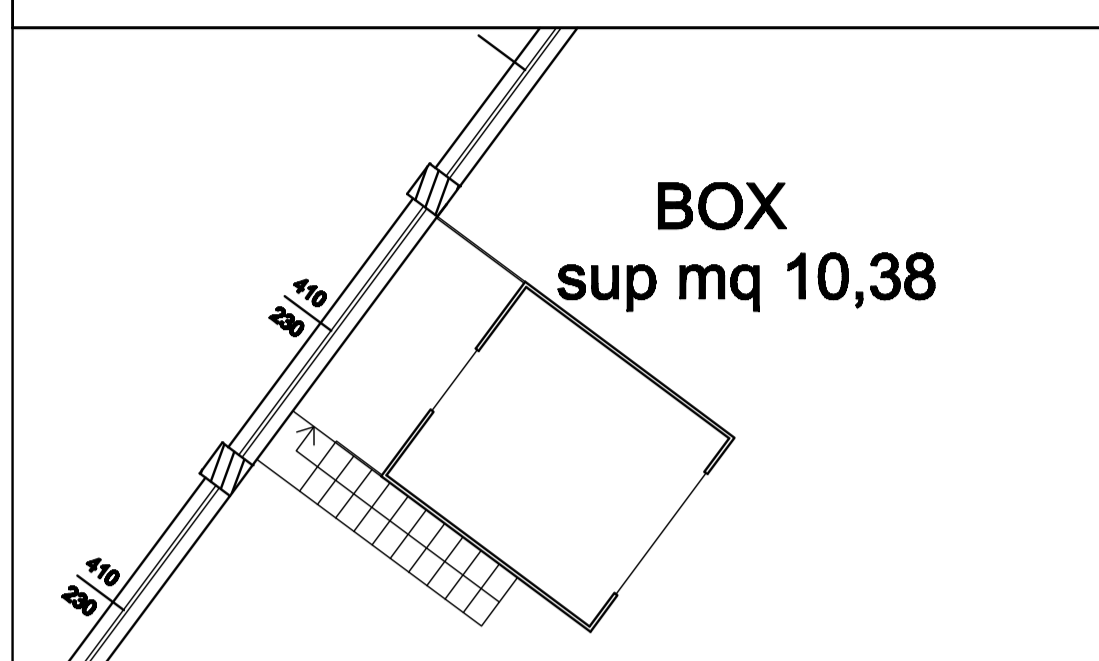


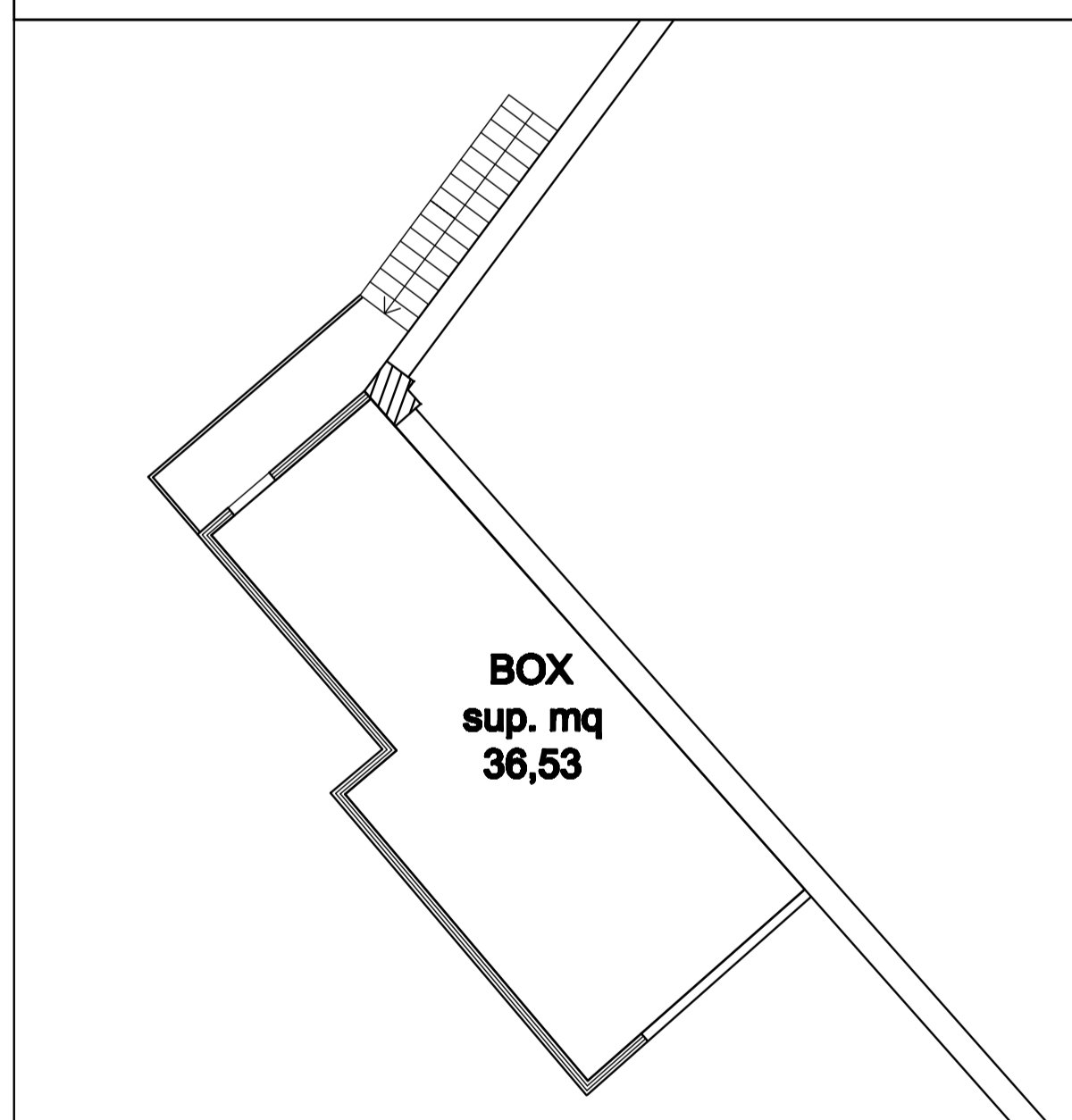
Pianta Soppalco part. A 1:100



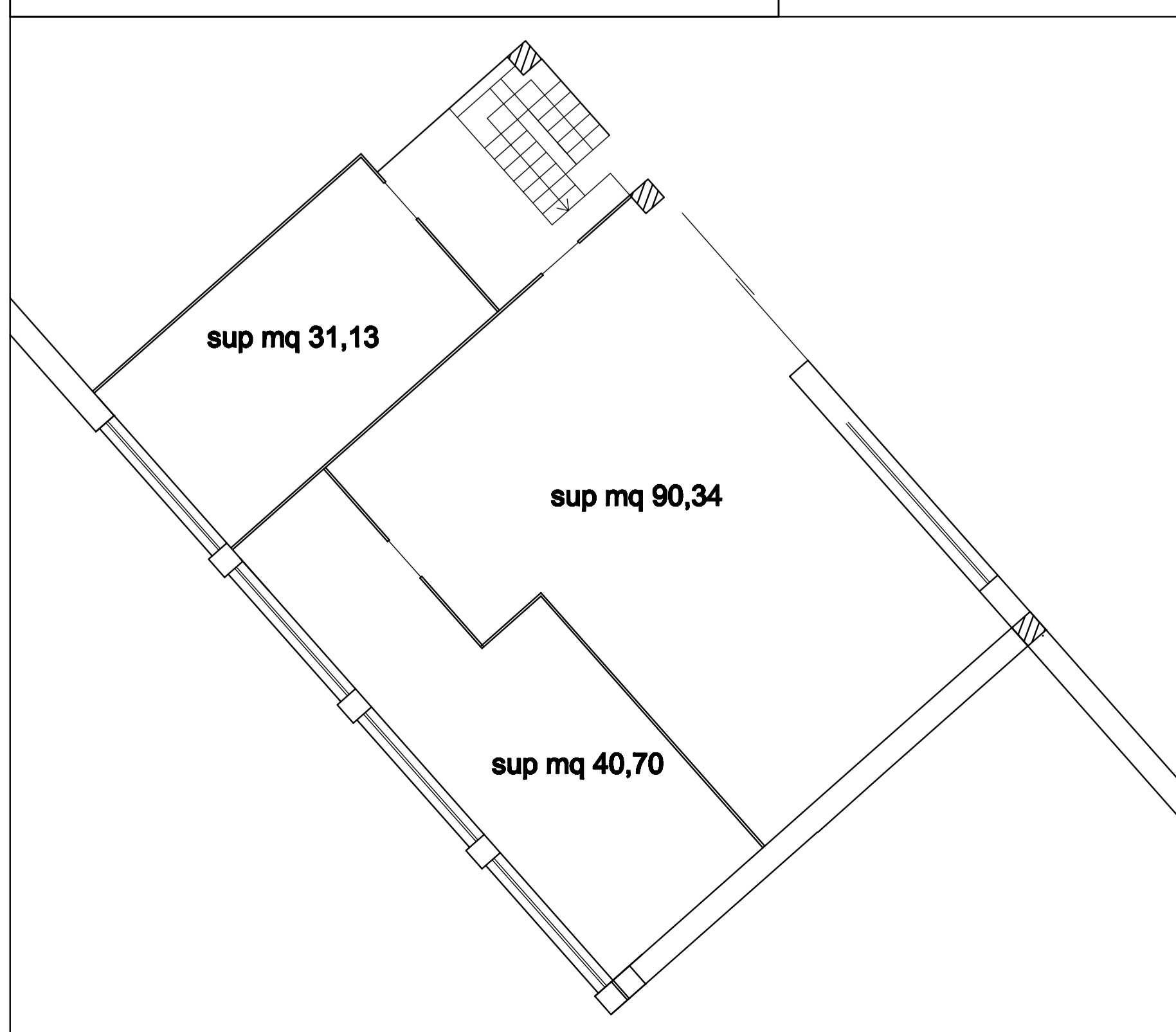
Pianta Soppalco part. D 1:100



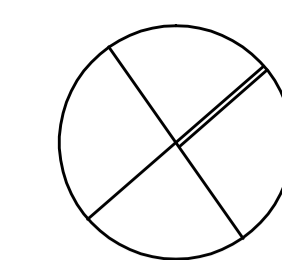
Pianta Soppalco part. B 1:100



Pianta Soppalco part. C 1:100



Quota di riferimento +0.00= Quota parcheggio esistente



Piano soppalco  
vd. part. A

BOX  
sup mq 15,03

Piano soppalco  
vd. part. D

BOX  
sup mq 3,87

MAGAZZINO  
sup mq 1.296,99

+10.18

Cabina  
Enel

Piano soppalco  
vd. part. B

Piano soppalco  
vd. part. C

BOX  
sup mq 17,65

sup mq 19,57

DEPOSITO  
sup mq 90,02

sup mq 58,40

LOCALE  
CONDIZIONATI  
SUP. 4,62

+10.15

Cabina  
Enel



STUDIO TECNICO FALCONI

GEOM. CAV. UGO FALCONI DOTT. ING. GIUSEPPE FALCONI

DOTT. AGR. FILIPPO FALCONI

CHIARI (BS) viale Teosa 19 Tel. 030 7000166-711102 Fax 030 7000993

E-mail: studio@falconi.it

COMUNE: LUMEZZANE (BS)

TAV.

PROGETTO: Piano di recupero "SABAF spa" relativo al subentro di nuova attività produttiva

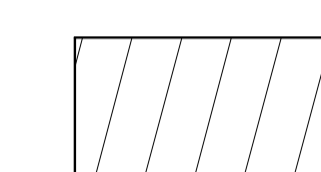
Pianta piano primo ATTUALE=DI PROGETTO

COMMITTENTI: SABAF S.p.a.

05

Scala: 1:200	Data: 23.09.2013	Agg.1	Agg.2	Agg.3
Dis.	PM	server	App.	Agg.4
				Agg.5
				Agg.6
				Agg.7

Pianta Piano Primo 1:100



NON OGGETTO DI INTERVENTO



UNITA' PRODUTTIVA n° 1



UNITA' PRODUTTIVA n° 2